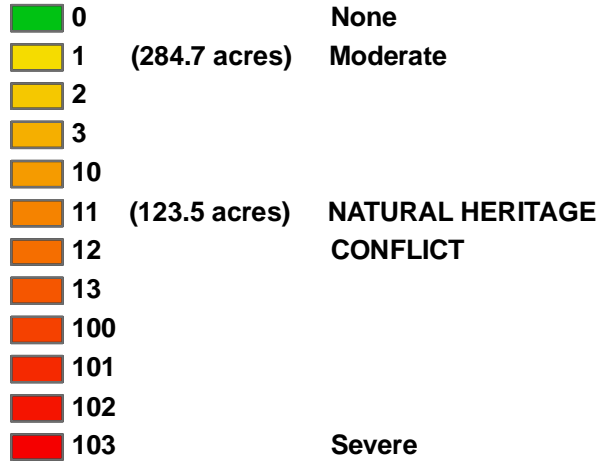






Schuylkill County, Porter Township: Ecological Conflict Potential with Wind Energy Development

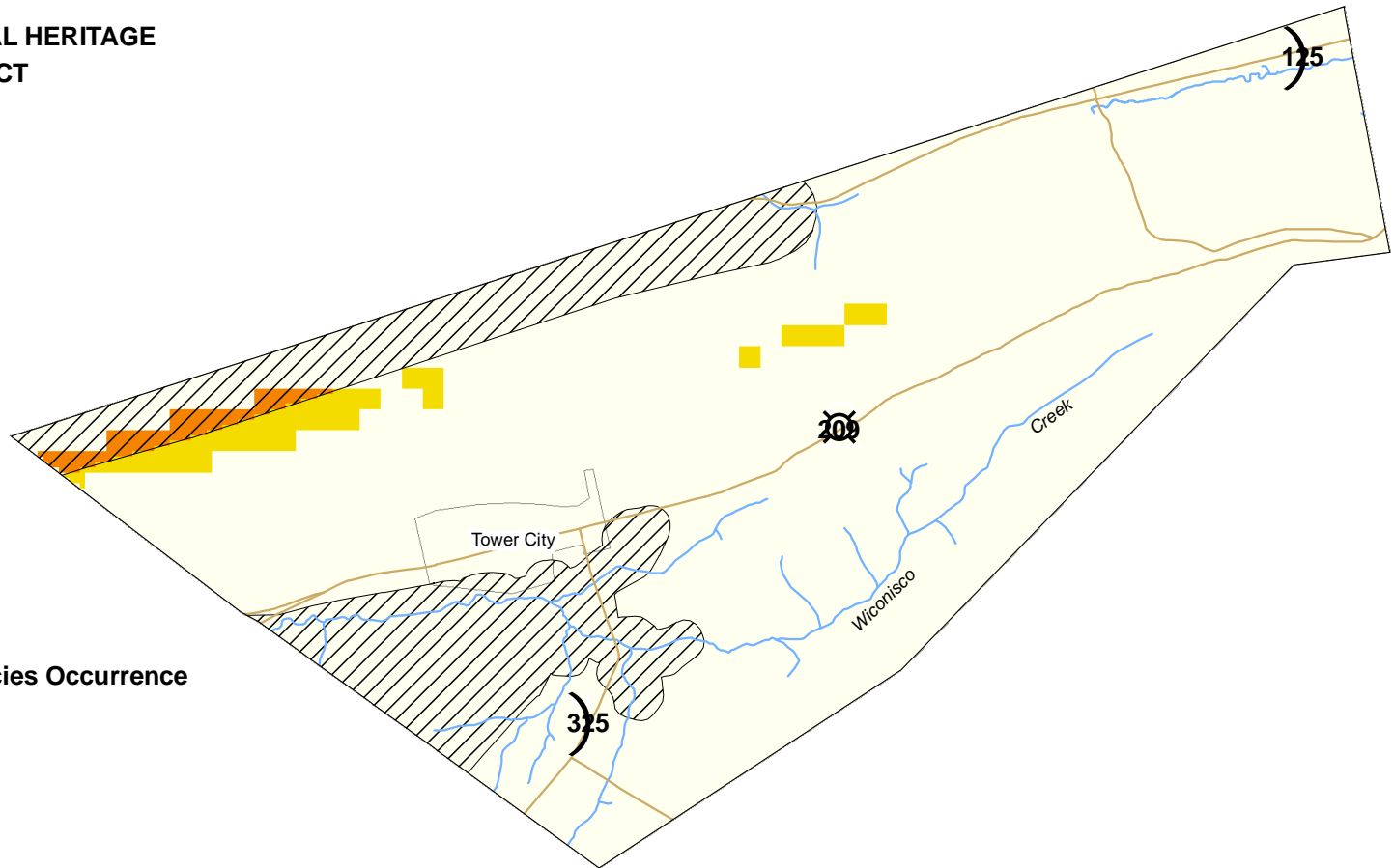
CONFLICT INDEX*



*Acreage shown where applicable.

FEATURES

-  Major Roads
-  Rivers/Streams
-  Administrative Boundary
-  Endangered/Threatened Species Occurrence (Natural Heritage Areas)



2

